

In This Issue

Exciting News	1
What's New?	1
Product Information	2
Product Highlight	2
Featured Dive Site	3
Testimonial	3
Did You Know?	3
Upcoming Events	4
Trivia Challenge	4

What's New?

We have improved on an already great product!! Our visor lights are now better, brighter and longer lasting!!

With 75 lumen output... a far brighter light than the previous 45 lumen output of the past. The burn time is now double that of the original visor light... last 3 hours!! We've also improved on aesthetics by changing the original green back plate to all black.

Enjoy a safer and longer dive in less visible conditions with the newly enhanced OCEAN REEF visor lights!!

English Version

Exciting News

OCEAN REEF Unveils New Product – DDR

OVERVIEW

Personal computers record the dive data of the diver and are a very helpful system in recording the “dive history/log” of a single diver.

OCEAN REEF has designed a dive data logging device for full face masks with integrated regulators: the DDR - Dive Data Recorder.

The DDR is a small, lightweight, self-powered recorder of the main dive parameters: time, depth and temperature. Its 10 year autonomy makes it an asset well worth adding to your OCEAN REEF full face mask.

A full face mask is a hi-tech product with an integrated regulator. It is a strong and sophisticated piece of diving gear that requires proper care and servicing. The DDR can help maintain proper service scheduling.

For business/commercial purpose, the full face mask might be shared or used by different divers. Thanks to the DDR, a complete and precise log of its activity is generated by showing the number of dives, the kind of dives, the depth reached, the dive profile, the water temperature and other data that may be of great use in terms of proper maintenance, care, performance and managing of the entire full face mask.

The DDR is very small (1.65” x 1.26” x 0.75” / 42 x 32 x 19 mm) and is installed at the factory on the right side of the full face mask visor. (Any state-of-the-art OCEAN REEF Space, Raptor, or Predator may be equipped with a DDR.)

The battery, the sophisticated sensor, the flash memory and processor (capable of stor-

ing 1,500 hours of dive data with a 10 second sampling interval) are sealed and protected in the DDR housing. Three sealed screws affix the small “brain” on the side of the full face mask visor.

The DDR is ready to be used and will automatically record depth and temperature profiles for all your dives. Downloading your dive data to your computer takes just a couple of mouse clicks utilizing the bundled software.



DIVE DATA

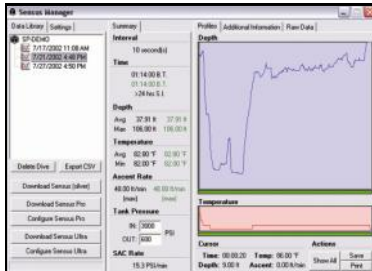
The DDR interface is clean, organized, and easy to use. All features are accessed from a single screen, divided into tabs with different functions... [\(cont'd on page 2\)](#)

Product Information

Dive Data Recorder (cont'd)

(cont'd from page 1)

Mask dives are sorted by device (if you own multiple recorders) and by date. Downloading is as simple as pressing a button... as is changing the sampling rate and other device parameters!



Choosing a dive generates a convenient, logbook-style dive summary. Everything you need to know is at a glance: bottom time, surface interval, average and max depths, average and minimum temperatures, and your maximum ascent rate. You can even enter your tank pressures to calculate SAC rate!

Detailed depth and temperature profiles are stored for every dive. A convenient and unobtrusive cursor allows you to investigate points of interest. Drag the mouse to zoom in and view highly detailed data.

CONFIGURABLE OPTIONS

Standard set up allows for the storage of numerous types of data in the DDR; including the full face mask serial number and production manufacturing information, along with all details of the pre-installed accessories (SDVL-visor lights, etc). You may also enter additional data and have more control over how your data is recorded by configuring a number of device parameters using our bundled software.

TECHNICAL SPECIFICATIONS

Activation: Activates at a depth of 3 ft. Deactivates after about 3 minutes above 3 ft. Threshold and end-timer are user-configurable.

Sampling Interval: 10 seconds. User-configurable from 1s to over 18 hrs. Capacity changes with interval (e.g. 1,500 hrs @ 10s., 150 hrs @ 1s.).

Capacity: Approx. 1,500 hours of data profiles (depth & temperature). Based on standard 10 second sample interval.

Working Limits: Depth, 500 feet. Temperature, -20° C to +40° C.

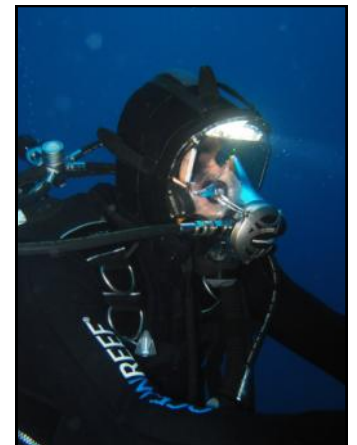
Units: Software selectable view of measurement (meters or feet) and degrees (C or F).

Downloading: Via exposed metal pads on case. Mates with universal download unit. Downloads to desktop, laptop, or Palm computers for profile analysis and logging.

Size: 1.65"x1.26"x 0.75" (42 x 32 x 19 mm)

Lifetime up to 10 yrs, permanent lithium cell.

Identification: Individually serialized both physically and electronically. Allows tracking of several devices on one computer.



For more information, visit our web site and download the new DDR brochure.



Product Highlight

Accessory – Glacier Strap

The newest innovation in OCEAN REEF accessories is the Glacier Strap. The Glacier Strap is designed for low temp and extreme condition dives. It is made of HNBR compound rubber. This compound is very stable (with elasticity and tearing resistance) at temps lower than -10° C. HNBR has a very high resistance to aggressive chemicals and solvents. This accessory now comes standard with the Neptune Space Predator and is available for purchase separately.

Featured Dive Site

Red Sea, Egypt – SS Thistlegorm



SS Thistlegorm Shipwreck
Red Sea, Egypt

“Tech diving the Thistlegorm allows longer bottom times and the chance to go ‘off-piste’ and find additional wreckage.”

At 415 feet long, the SS Thistlegorm has sat beneath the ocean surface for some 60 years. Sunk by German bombers on October 6, 1941, during WWII, this merchant ship still holds her original cargo.

Divers may reach the bow at 13 meters while the stern dips down to 31 meters. The sanctuary of this vessel protects divers from the sometimes stronger currents of the Northern Red Sea.

Once inside, it is possible to explore the Thistlegorm’s holds although multiple dives are necessary to truly cover all aspects of this magnificent museum.

For more information on this and other world famous dive sites in the Red Sea, visit John Kean at Liquid World SCUBA: www.liquidworldscuba.com

(source: www.ssthistlegorm.com)

Testimonial

Shark Diver’s CEO Patric Douglas

“Full face masks are absolutely essential to my job. In fact, I’m not sure how we’d get the spectacular results my clients expect without the ability to communicate clearly underwater. I often run a team of safety divers, camera operators and underwater talent, all of whom are involved in an intricate dance of

filming top order predators while relying on me to ensure their safety.

OCEAN REEF masks were an integral part of shooting Mythbusters’ Shark Week 2008. With so many myths to bust or confirm, we required reliable full face masks that also look great on

camera. The OCEAN REEF Neptune was exactly what the job required, and I was stoked on how comfortable they were even after an 8 hour day underwater!”

For more information about Shark Diver or to schedule a dive, visit: www.sharkdiver.com

“I was stoked on how comfortable they were...”



Did You Know?

We Need Your Opinion

We want to know what you think! Please take a few minutes to complete our survey online. We want to know if we’re giving you what YOU want. Creating the Future has progressed over time and evolved into a more user friendly newsletter. However, if there is something else you would like us to cover or discuss, just let us know through this survey!

No personal information required will be

shared. We simply would like to better Creating the Future for you, our customers and readers. The survey should only take a couple minutes to complete and all data will be used to make changes in accordance with what YOU are looking for!

Please help us by clicking, or copying and pasting into your browser, the provided link.

The Creating the Future survey may be accessed via the following:

<https://app.icontact.com/icp/sub/survey/start?sid=2860&cid=501781>

Thank you for taking the time to give us the valuable input we need to make this newsletter more of what you want.

OCEANREEF®

connecting divers

1699 La Costa Meadows Drive, Suite 101
San Marcos, California 92078

Phone: 760.744.9430
Fax: 760.744.9525
Toll free: 800.922.1764
E-mail: advertising@oceanreefgroup.com

Please, let us know if you would prefer to receive this newsletter electronically.



Upcoming Events

Orlando, Florida – DEMA 2009

This year's DEMA Show will be held in Orlando, Florida. OCEAN REEF will be among the many new and returning exhibitors to this event. If you plan on attending, stop by and say hello!

Here is what you will find at DEMA Show 2009:

- Hundreds of exhibits featuring the leading dive equipment manufacturers, travel destinations, water sports apparel, and services.
- DEMA Sponsored Seminars on state-of-the-industry and current economic topics.
- DEMA Retailer Resource Center (RRC) -- an interactive display area and educational program that provides retailers with the latest tools and industry best-practices.
- Image Resource Center (IRC) -- an exclusive area of the show floor featuring photo- and video-related exhibitors as well as seminars on how underwater photography and videos can be powerful selling tools for the dive retailer.
- Dive Training Agency and Exhibitor Sponsored Seminars
- DEMA Awards Party, the premier industry networking event of 2009.
- The exciting after-hours socializing and networking opportunities that Orlando offers.

(source: www.demashow.com)



Trivia Challenge

How many optional answers are there to question #7 of the Creating the Future survey?

Email your answer **and your mailing address** to: advertising@oceanreefgroup.com (Entries without an address will not be accepted.)

The first five responses with the correct answer will receive a \$5 gift card to Starbucks! (Restricted to U.S. residents only.)